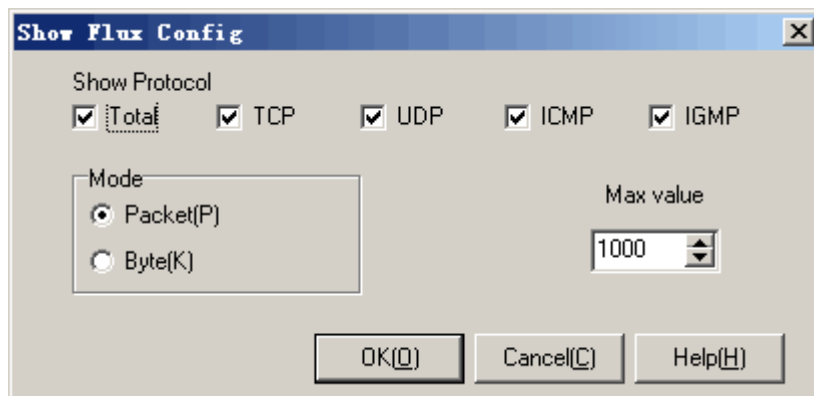


5.5. Show Flux

The Show flux module is used to configure the view of the [Flux View]. The administrator can select a favorite way of statistics display. Following shows a [Config] dialog:



Operation instruction:

1. In the list [Show Protocol], choose which one to display.
2. In the frame [Mode], choose which unit is used for measuring.
3. In the text box [Max Value], enter a digit to display the maximum value.
4. Press <OK> or <Cancel>.

Additional instruction:

1. Total flow volume: total of all protocols.
2. TCP: total of Transmission Control Protocol.
3. UDP: total of User Datagram Protocol
4. ICMP: total of Internet Control Message Protocol.
5. IGMP: total of Internet Group Management Protocol.
6. In the frame [Mode], "Packet(P)" means flow is measured by a unit of packet; "Byte(K)" means flow is measured by a unit of byte.
7. The bytes here monitored include not only the TCP, UDP contents, but also Ethernet headers, IP headers and TCP headers.